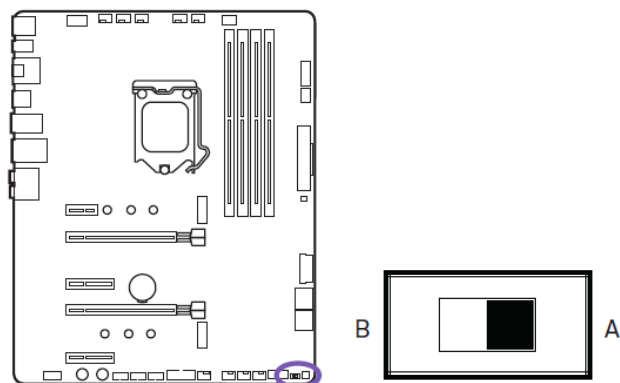


NOTE:

Before you begin, ensure that the BIOS ROM you are updating is switched to side A. If it is currently on side B, turn off the power to your PC and PSU and wait 30 seconds. Toggle the switch to A and press the Clear CMOS button located on the rear I/O. Turn the PSU power back on and turn on your PC. You can be certain BIOS A is activated when the ROM LED is off.



American Megatrends Inc.(AMI) provides two utilities to update the motherboard BIOS, AFUWIN and AFUWINGUI. Below are the steps to get your BIOS up to date. Please pay close attention to the following instructions to ensure the process goes smoothly.

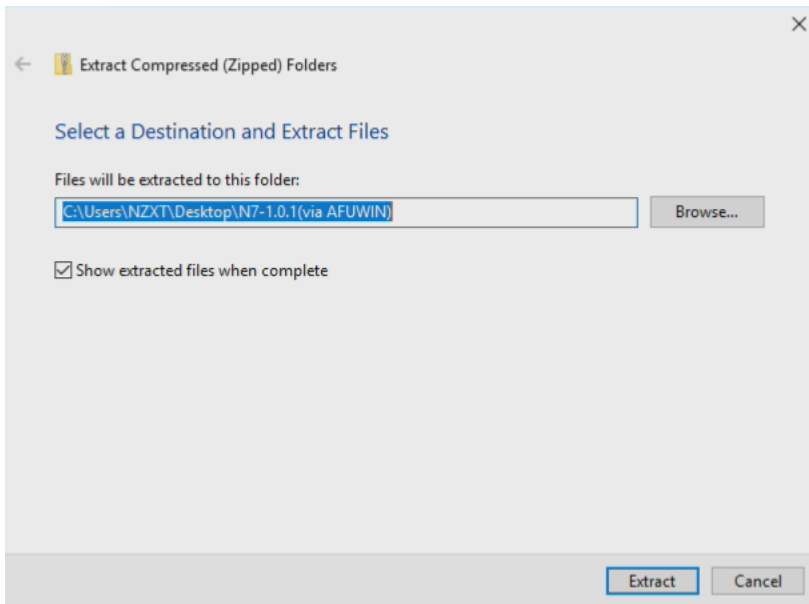
- I. Update the BIOS using Automated AFUWIN.....2
- II. Update the BIOS using AFUWINGUI.....5

WARNING:

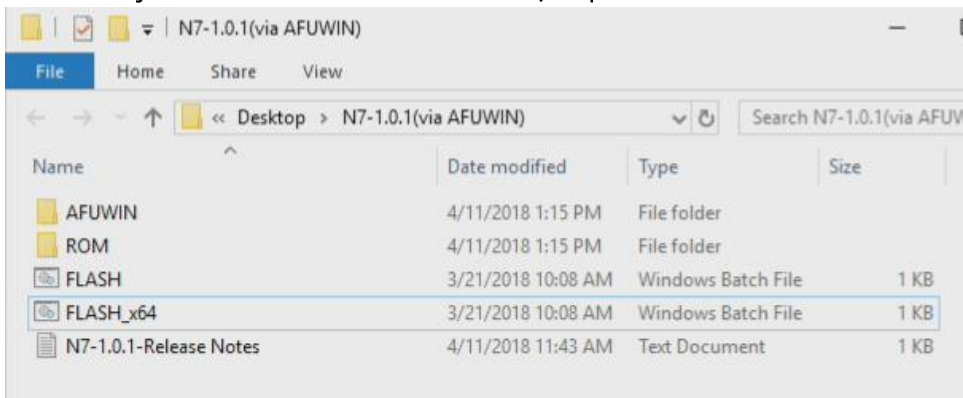
TO PREVENT ROM DATA CORRUPTION, CLOSE ALL OTHER APPLICATIONS AND DO NOT SHUT DOWN OR RESET YOUR SYSTEM DURING BIOS UPDATE.

I. Update the BIOS using Automated AFUWIN

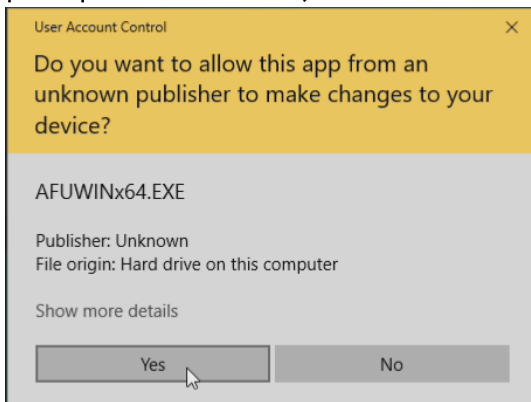
1. Download *N7-1.0.x (via AFUWIN).zip* and extract the files to a safe location.



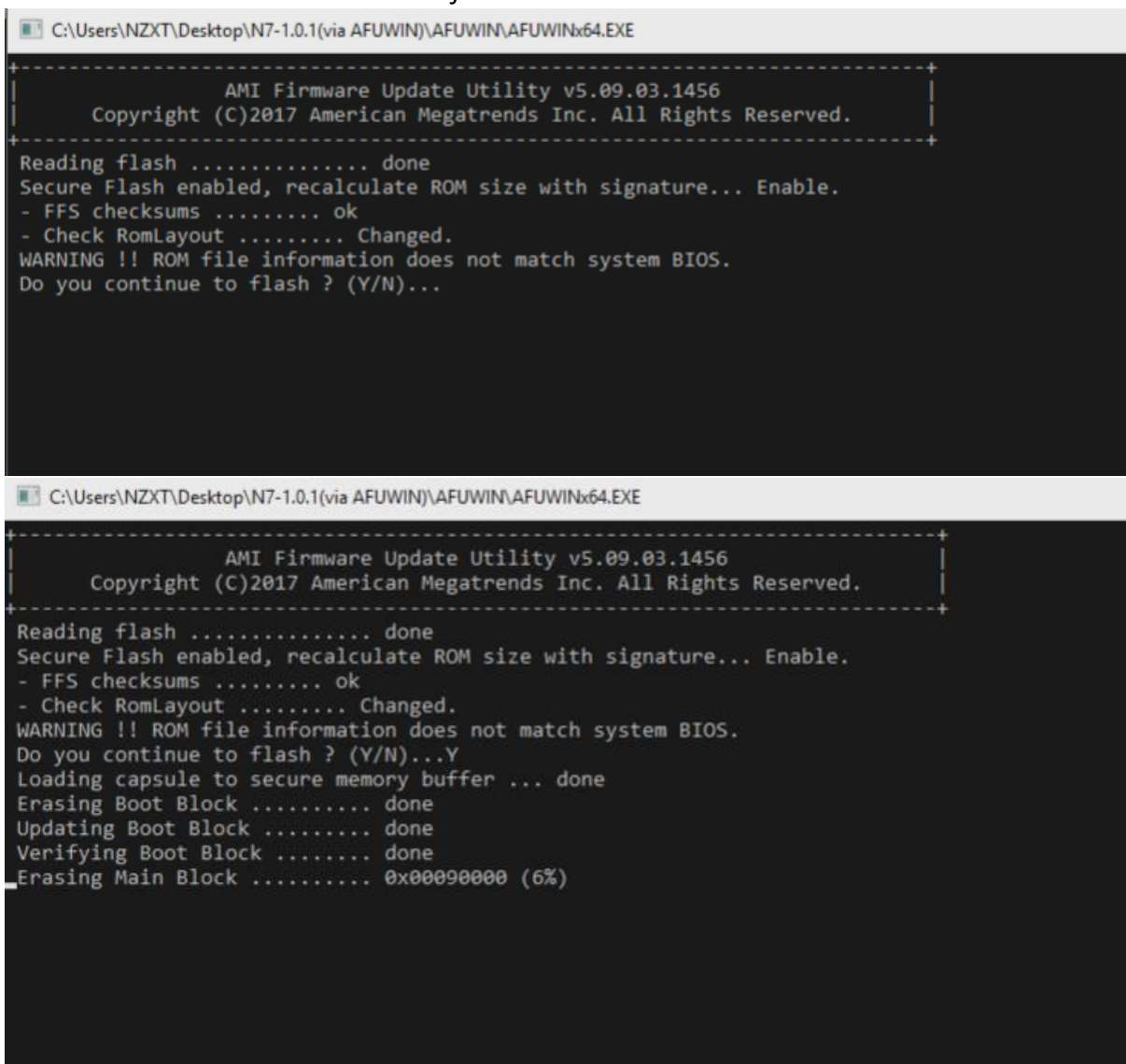
2. Depending on your Operating System, open the corresponding FLASH.bat. Ie. If your Windows is 64-bit, open FLASH_x64.bat.



3. AFUWIN will automatically initialize and lock your input devices. If prompted for UAC, click 'Yes' to proceed.



4. You will be prompted with a Warning stating the “ROM file information does not match system BIOS,” this is normal for the first time updating to 1.0.1. Press the <Y> key to continue.



```
C:\Users\NZXT\Desktop\N7-1.0.1(via AFUWIN)\AFUWIN\AFUWINx64.EXE

+-----+
|          AMI Firmware Update Utility v5.09.03.1456          |
| Copyright (C)2017 American Megatrends Inc. All Rights Reserved. |
+-----+
Reading flash ..... done
Secure Flash enabled, recalculate ROM size with signature... Enable.
- FFS checksums ..... ok
- Check RomLayout ..... Changed.
WARNING !! ROM file information does not match system BIOS.
Do you continue to flash ? (Y/N)...

C:\Users\NZXT\Desktop\N7-1.0.1(via AFUWIN)\AFUWIN\AFUWINx64.EXE

+-----+
|          AMI Firmware Update Utility v5.09.03.1456          |
| Copyright (C)2017 American Megatrends Inc. All Rights Reserved. |
+-----+
Reading flash ..... done
Secure Flash enabled, recalculate ROM size with signature... Enable.
- FFS checksums ..... ok
- Check RomLayout ..... Changed.
WARNING !! ROM file information does not match system BIOS.
Do you continue to flash ? (Y/N)...Y
Loading capsule to secure memory buffer ... done
Erasing Boot Block ..... done
Updating Boot Block ..... done
Verifying Boot Block ..... done
Erasing Main Block ..... 0x00090000 (6%)
```

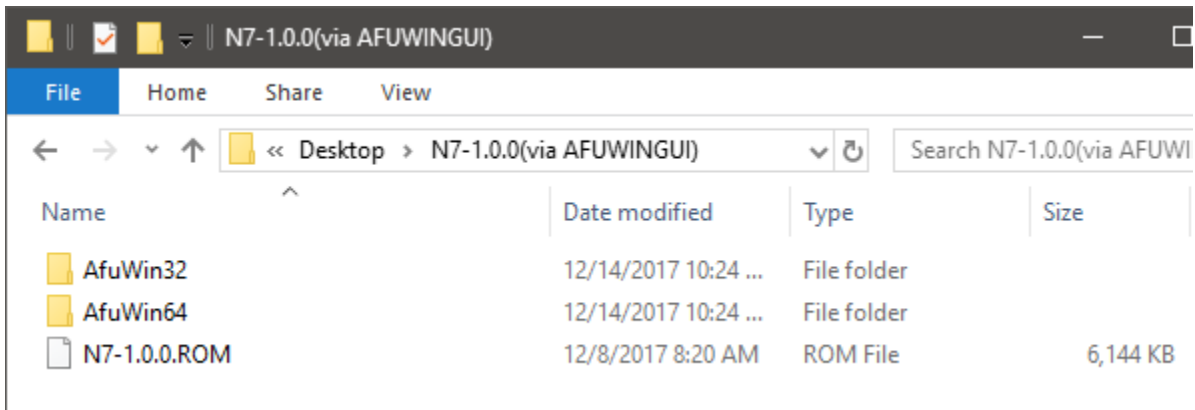
5. Once complete, the program will close and return to your desktop.
6. Shutdown your PC safely and turn the PC back on. The PC will power cycle a few times to build the new BIOS inside the BIOS ROM.

7. Once the BIOS has successfully build itself, you will be greeted with the following AMI screen. Enter BIOS by pressing the or <F2> key and verify your BIOS version. Make any changes to your settings as necessary and save and exit. You can continue to run your system like before.

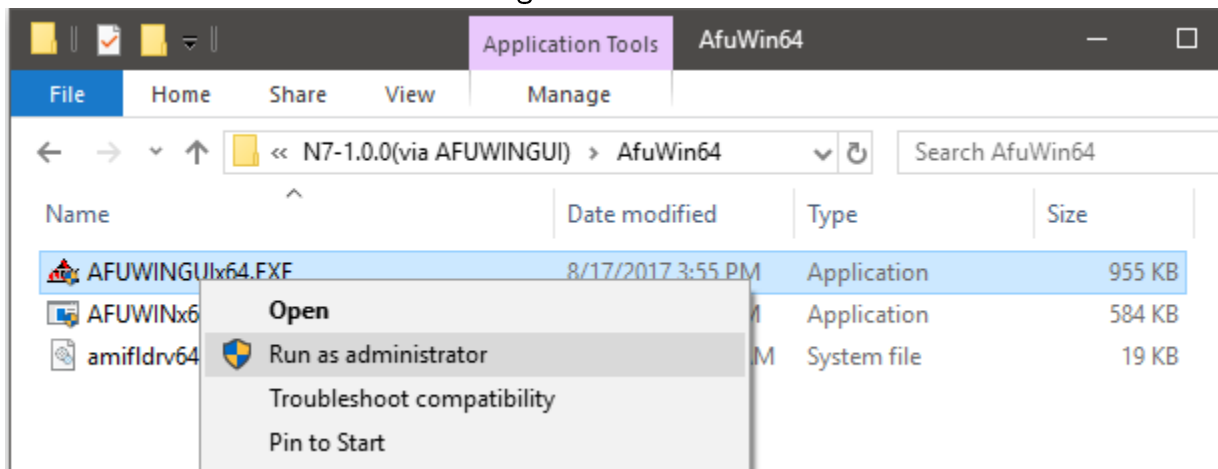


II. Update the BIOS using AFUWINGUI

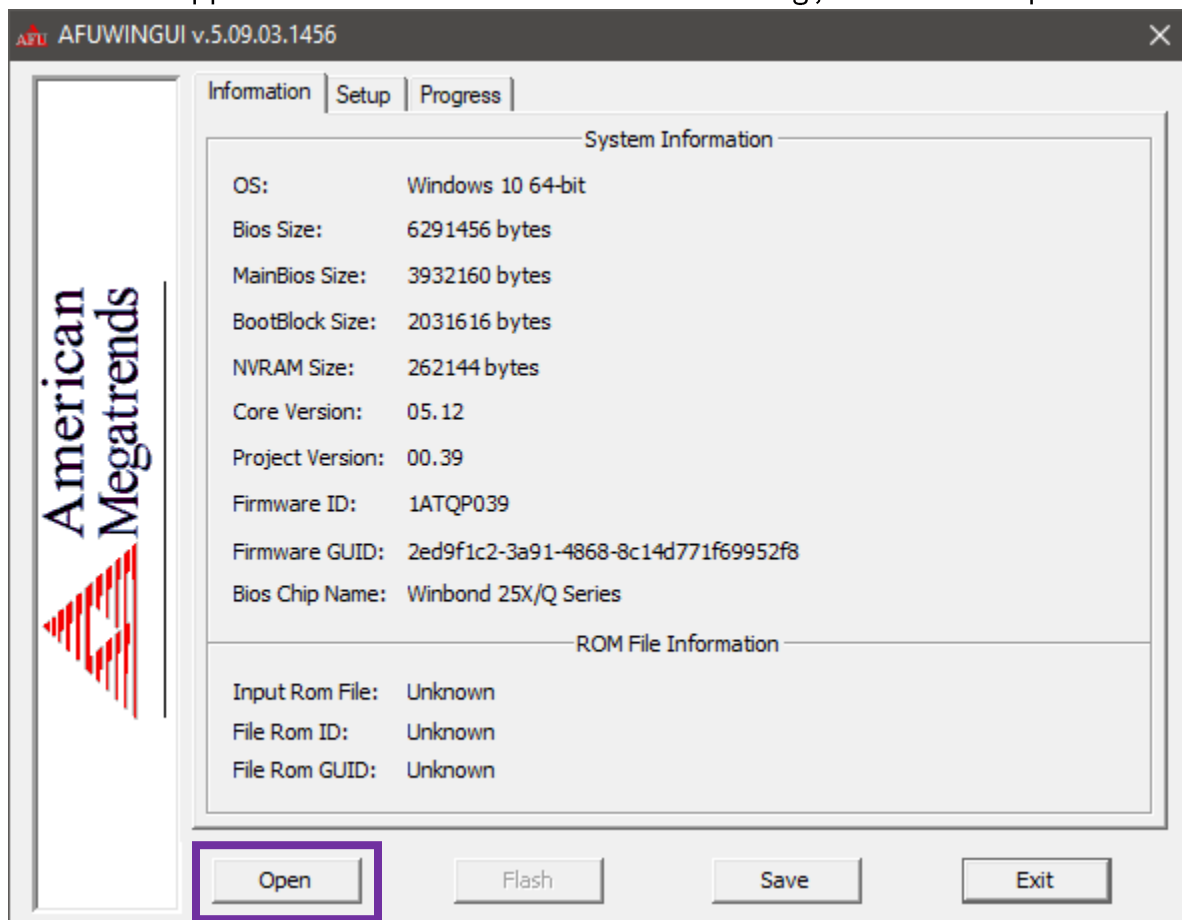
1. Download N7-1.0.x(via AFUWINGUI).zip and extract the files to a safe location.



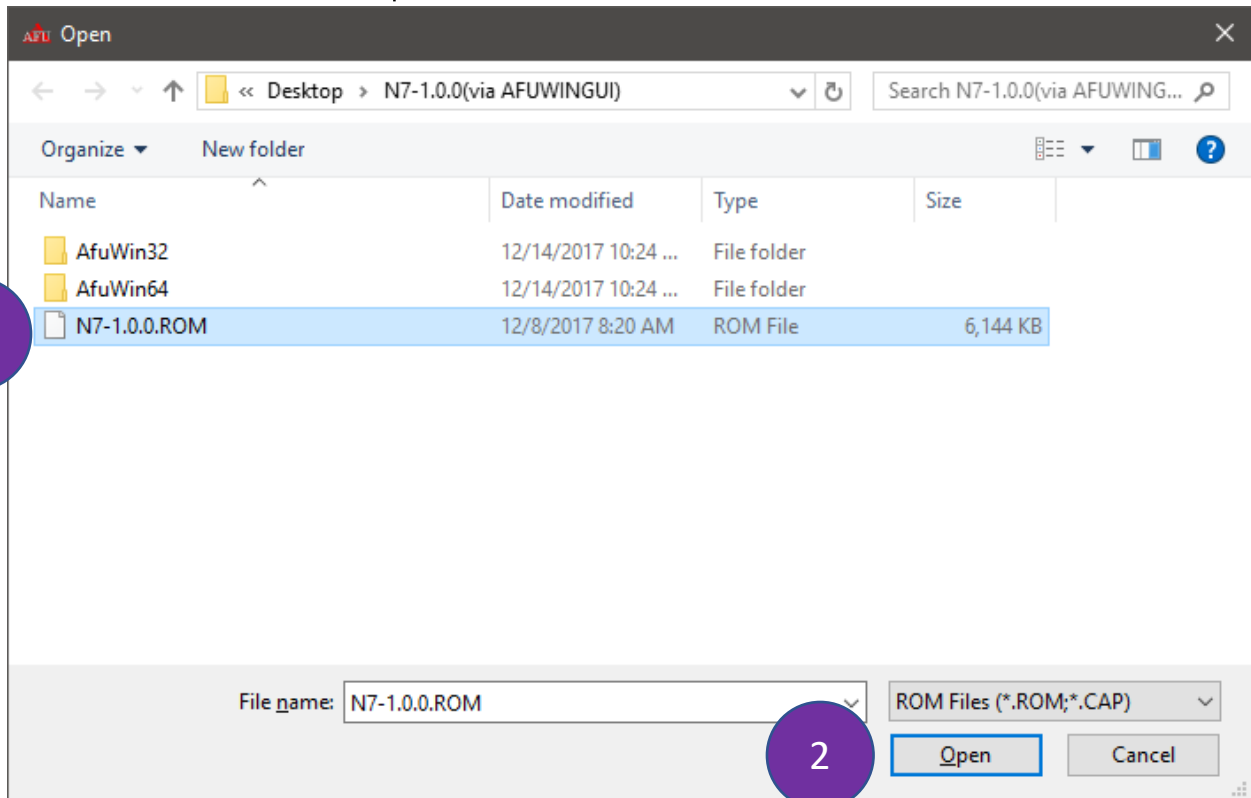
2. Open the corresponding AfuWin file according to your Operating System. I.e. If your OS is a 64-bit Windows, open AfuWin64.
3. Execute AFUWINGUI using Administrator rights by right-clicking on the executable file and selecting "Run as administrator".



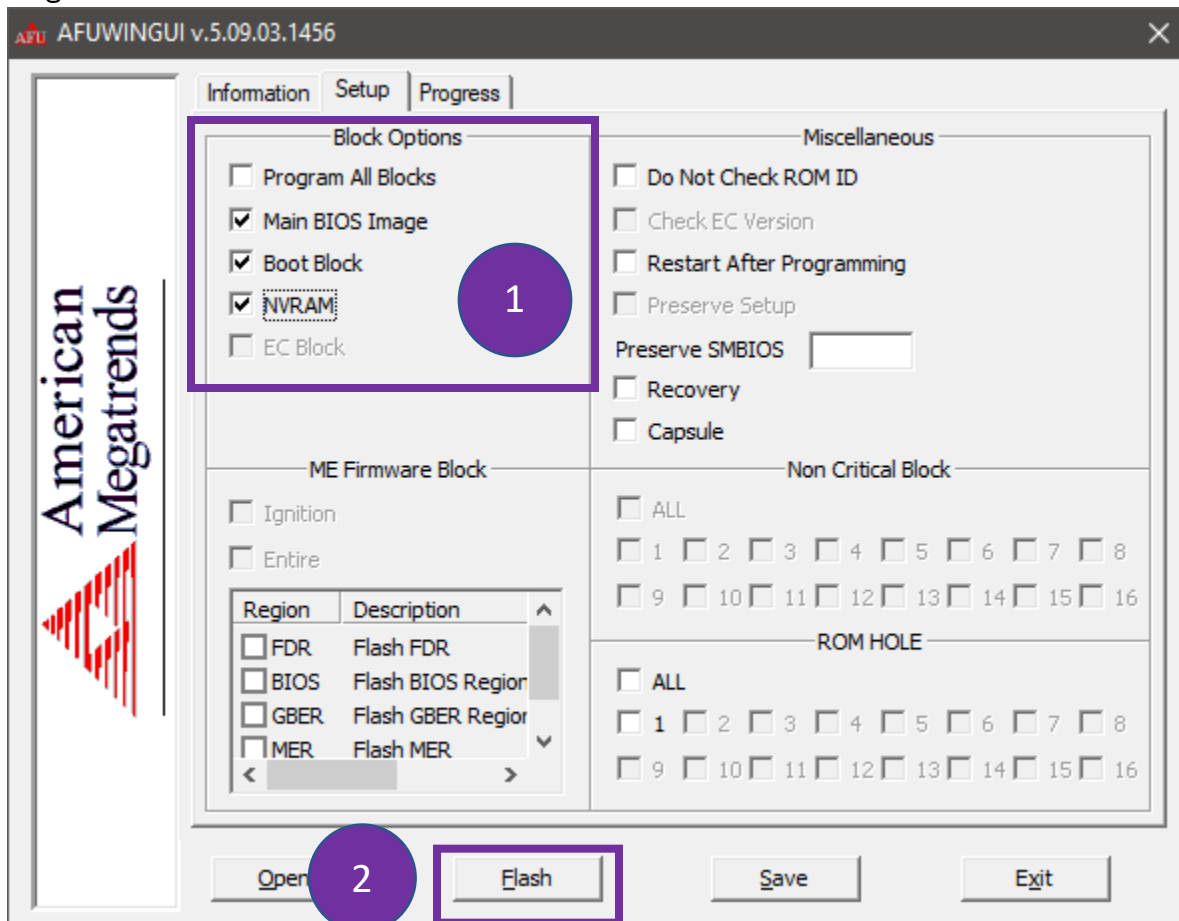
4. When the application window finishes loading, click on Open.



5. Select the ROM file that is included in the zipped package. Ie. N7-1.0.0.ROM and click Open.



6. Once loaded, the tab will automatically switch to the Setup Tab. Ensure the following items under Block Options are checked. Click Flash to begin.



NOTE: TO PREVENT DATA CORRUPTION, CLOSE ALL OTHER APPLICATIONS AND DO NOT SHUT DOWN OR RESET YOUR SYSTEM DURING BIOS FLASHING.

7. Once Done is indicated, shutdown your PC safely and turn the PC back on. The PC will power cycle a few times to build the new BIOS inside the BIOS ROM. Once loaded, enter BIOS and verify your BIOS version. You can continue to run your system like before.